

£1,750 PCM
St. Peters Green
Hitchin, SG5 3SW

PROPERTY SUMMARY

A gorgeous three-bedroom cottage set in the quiet village of Holwell brings a country feel with a modern touch.

The property briefly comprises of an entrance hall, kitchen/ breakfast room, a large living room, study and downstairs cloakroom, three good size bedrooms, the main with ensuite and a family bathroom.

Externally a lovely rear garden with side gated access leading to a garage and private parking. The property has the added benefits of over half an acre of private estate meadowland with an allotment area.

This property is bursting with character and is in fantastic condition, and we highly recommended booking in a viewing, so you do not miss out. Holwell is positioned between the historic market town of Hitchin and the Henlow/Lower Stondon area. Providing great links to A1(M), M1 motorway, London Luton airport and Hitchin train station.

3



2



1







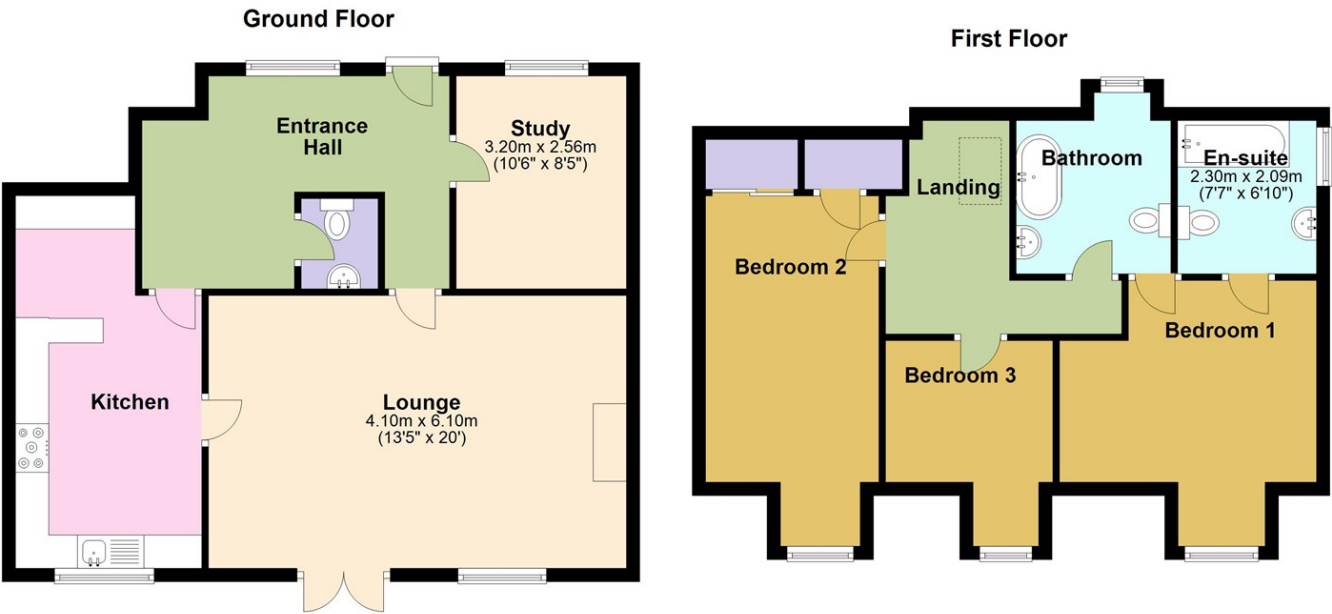


LOCAL AUTHORITY

TENURE

COUNCIL TAX BAND
C

VIEWINGS
By prior appointment only



Please note that although all efforts have been made to provide accurate measurements and positioning of fixtures, this floorplan is for marketing purposes and is to be used as a guide only.

Plan produced using PlanUp.

Energy Efficiency Rating		
	Current	Potential
Very energy efficient - lower running costs		
(92 plus) A		
(81-91) B		
(69-80) C		
(55-68) D		
(39-54) E		
(21-38) F		
(1-20) G		
Not energy efficient - higher running costs		
England & Wales		EU Directive 2002/91/EC

Agents Note: Whilst every care has been taken to prepare these particulars, they are for guidance purposes only. All measurements are approximate and are for general guidance purposes only and whilst every care has been taken to ensure their accuracy, they should not be relied upon and potential buyers/tenants are advised to recheck the measurements



OFFICE ADDRESS
Putterills Lettings
123 London Road
Knebworth
SG3 6EX

OFFICE DETAILS
01462 419333
lettings@putterills.co.uk
www.putterills.co.uk